

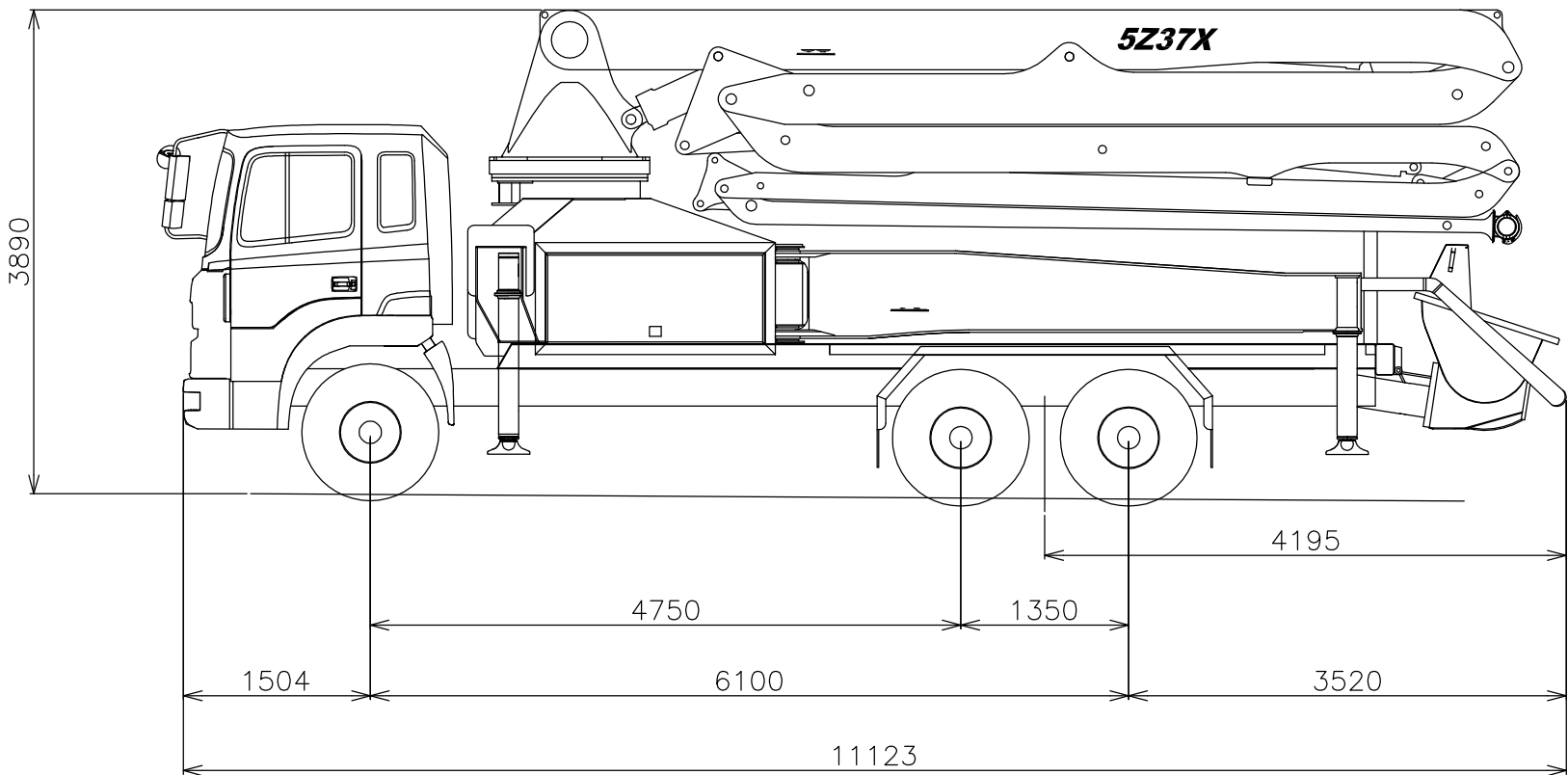
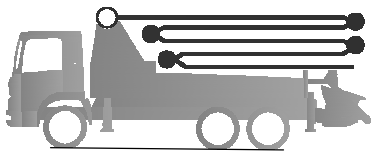


CENTURION

AW TRUCKS LIMITED

4Z28X

TRUCK-MOUNTED
CONCRETE PUMP



Note : Mounted on HYUNDAI truck as sample. Dimensions and weights will vary with different truck model and specifications.

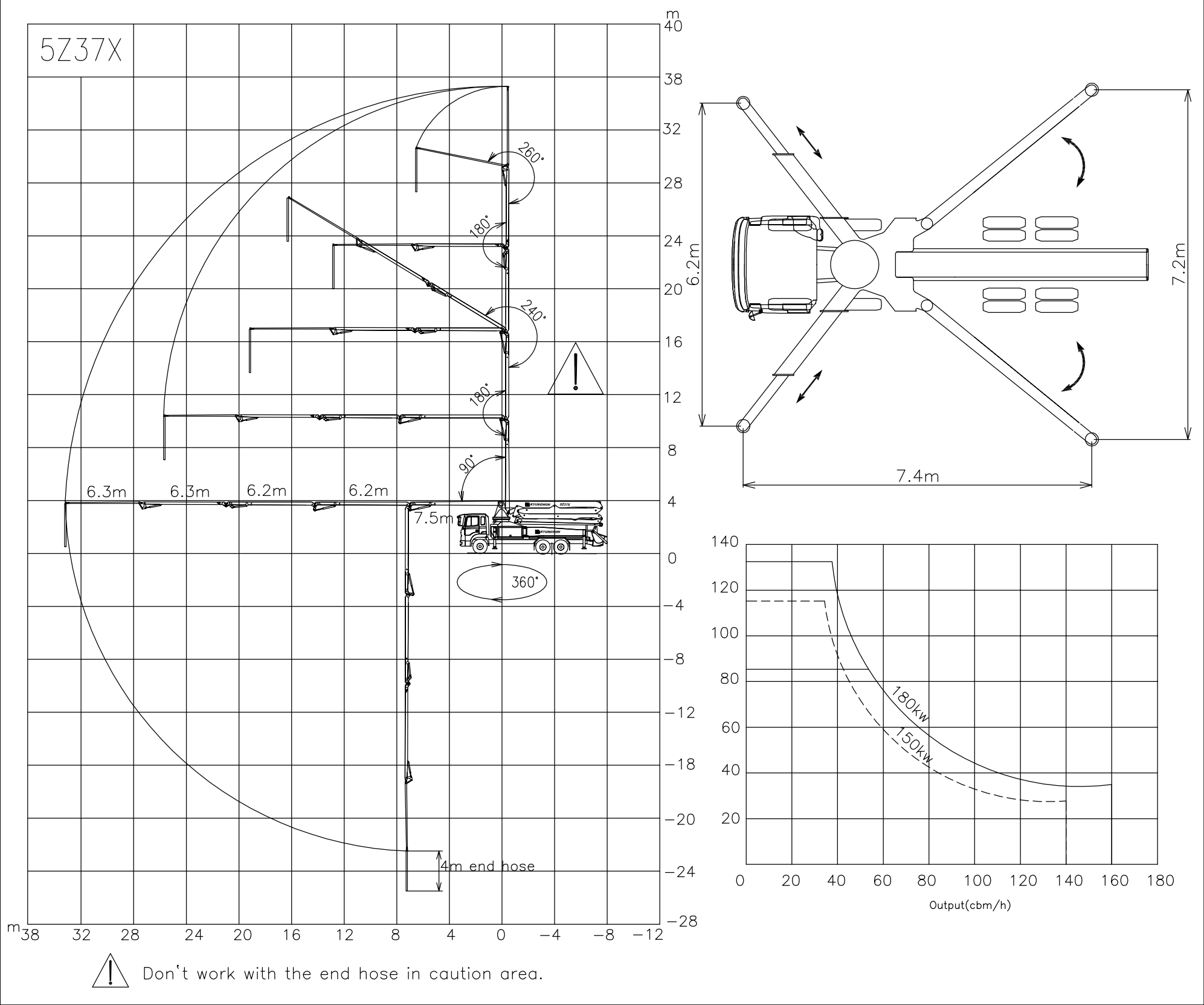
TECHNICAL DATA

Boom specifications		
No. of sections	–	5
Folding system	–	Z–folding
Vertical reach	m	37
Horizontal reach	m	33
Reach depth	m	–26
Unfolding height	m	7.2
End hose length	m	4
Pipeline size(ID)	mm	125

Pump specifications			KOB100A	KOD130A	KOD160A	KOD185AHP
Rod side	Output	m ³ /h	97	130	160	186
	Delivery pressure	bar	85.6	69.5	70	87
	No. of strokes	no./min	24.4	25	30	35
Piston side	Output	m ³ /h	60	81	100	125
	Delivery pressure	bar	111.8	111.8	111	129
	No. of strokes	no./min	15	15.5	19	24
Piston diameter		ømm	230	230	230	230
Stroke length		mm	1600	2100	2100	2100
Concrete hopper		ℓ	600			

Maximum theoretical values listed

Reach information diagram, Support, Performance diagram



Delivery scope

	Standard	Options Package
Outrigger pads	●	
Tool set	●	
Coverall	●	
Safty helmet	●	
Sponge ball for cleaning pipe line	●	
Radio remote controller	●	
Cable remote controller with 40m cable	●	
Automatic greaser for hopper	●	
Grease gun	●	
Two colors painting	●	
Water pump and nozzle with hose	●	
Spare hydraulic hose	●	
Spare relay and fuse	●	
Manual and spare parts book	●	

	Standard	Options Package
4M end hose	●	
Working search light on hopper	●	
Concrete pipe line, st52	●	
Concrete pipe line, twin layer		●
Concrete pipe line, heat-treated		●
Tunsten carbide wear plate and wear ring		●
Aluminum deck		●
Aluminum hopper cover		●
Automatic greaser for boom		●
Vibrator on hopper grid		●
High pressure piston water pump		●
Working search light on boom		●
Big mouth s-valve		●
Air compressor		●