



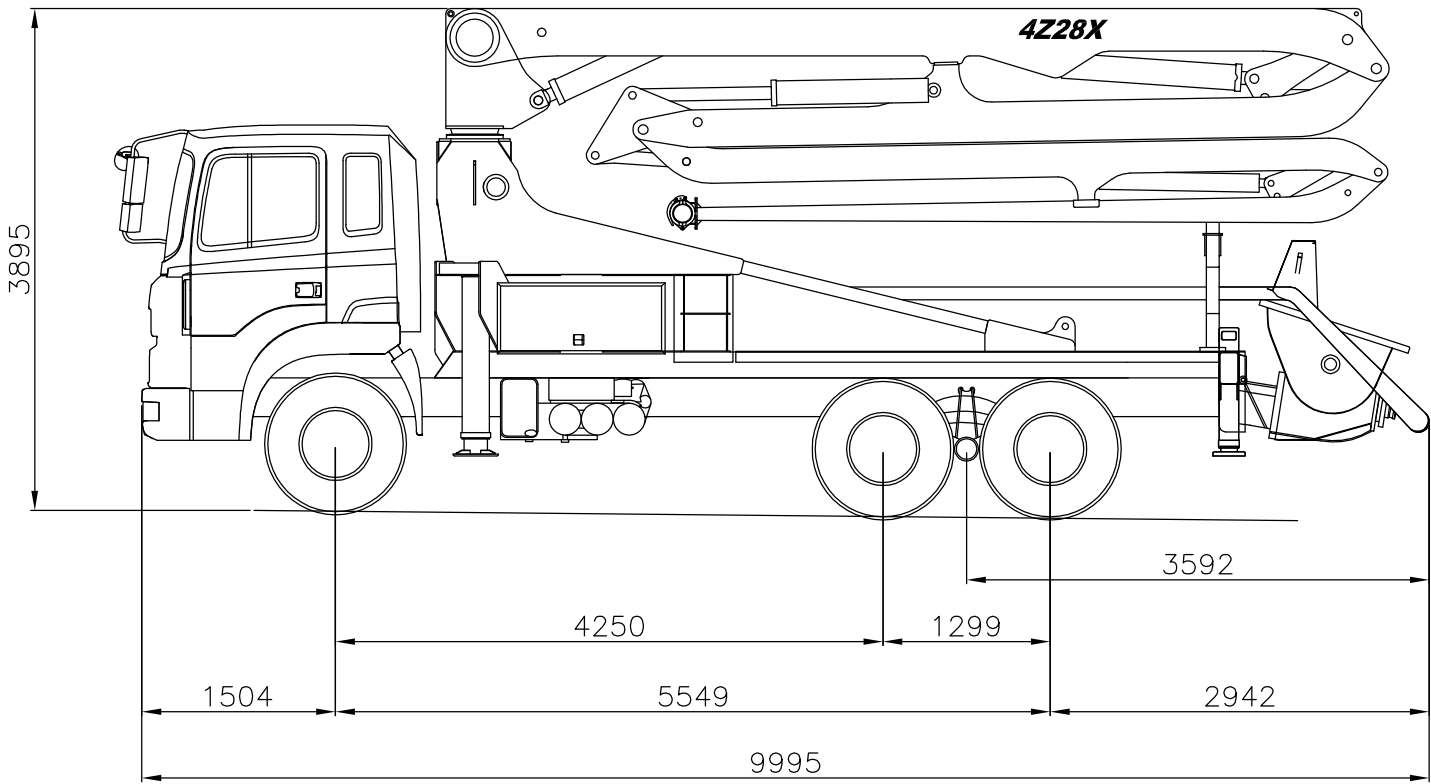
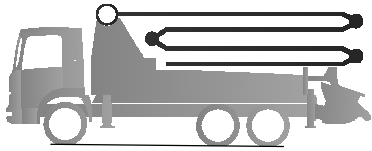
C

ENTURION

AW TRUCKS LIMITED

4Z28X

TRUCK-MOUNTED
CONCRETE PUMP



Note : Mounted on HYUNDAI truck as sample. Dimensions and weights will vary with different truck model and specifications.

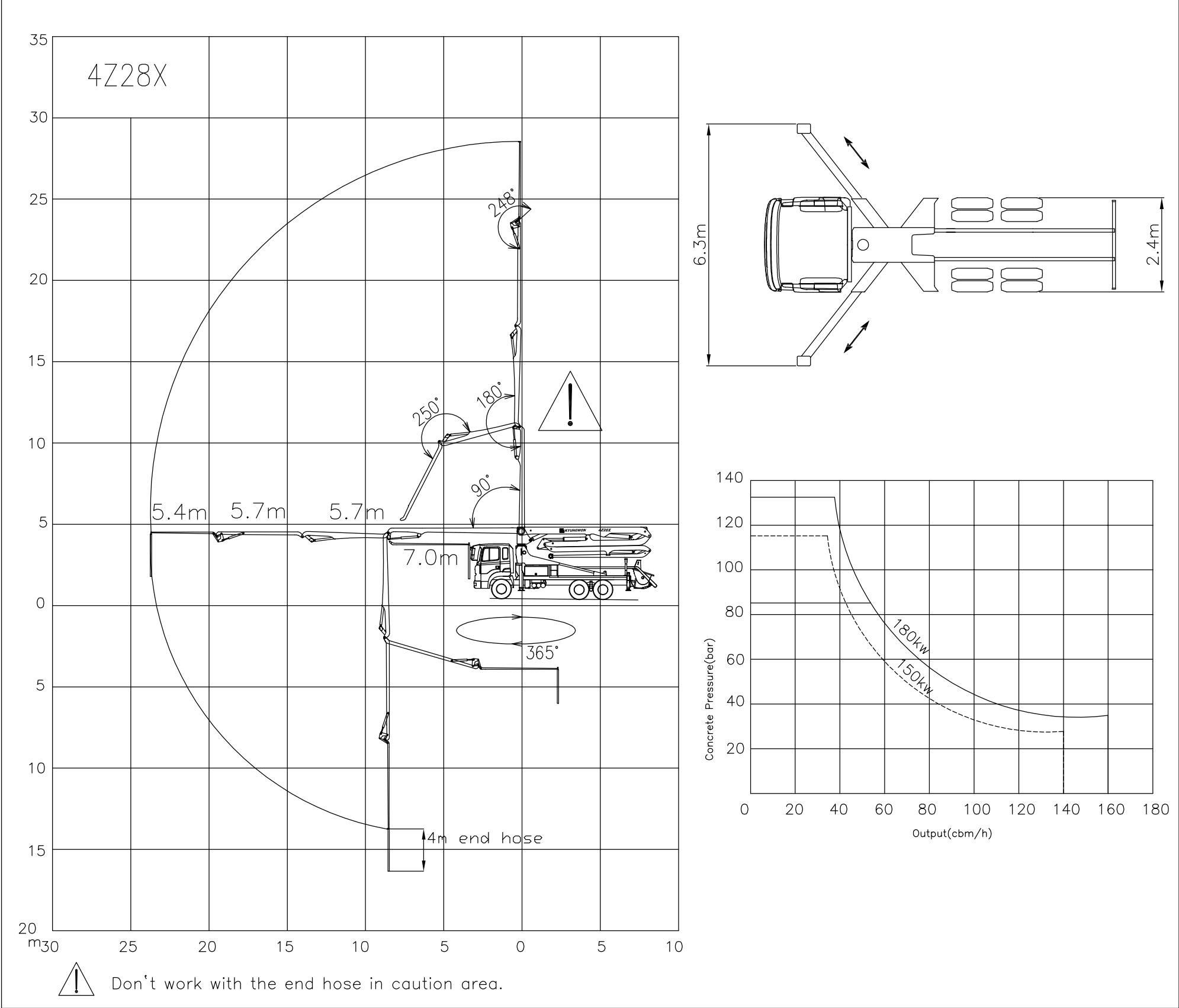
TECHNICAL DATA

| Boom specifications | | |
|---------------------|----|-----------|
| No. of sections | — | 4 |
| Folding system | — | Z–folding |
| Vertical reach | m | 27.3 |
| Horizontal reach | m | 23.4 |
| Reach depth | m | –16.6 |
| Unfolding height | m | 6.5 |
| End hose length | m | 4 |
| Pipeline size(ID) | mm | 125 |

| Pump specifications | | | KOB100A | KOD130A | KOD160A | KOD185AHP |
|---------------------|-------------------|-------------------|---------|---------|---------|-----------|
| Rod side | Output | m ³ /h | 97 | 130 | 160 | 186 |
| | Delivery pressure | bar | 85.6 | 69.5 | 70 | 87 |
| | No. of strokes | no./min | 24.4 | 25 | 30 | 35 |
| Piston side | Output | m ³ /h | 60 | 81 | 100 | 125 |
| | Delivery pressure | bar | 111.8 | 111.8 | 111 | 129 |
| | No. of strokes | no./min | 15 | 15.5 | 19 | 24 |
| Piston diameter | | ømm | 230 | 230 | 230 | 230 |
| Stroke length | | mm | 1600 | 2100 | 2100 | 2100 |
| Concrete hopper | | ℓ | 600 | | | |

Maximum theoretical values listed

Reach information diagram, Support, Performance diagram



Delivery scope

| | Standard | Options Package |
|--|----------|-----------------|
| Outrigger pads | ● | |
| Toolset | ● | |
| Coverall | ● | |
| Safty helmet | ● | |
| Sponge ball for cleaning pipe line | ● | |
| Radio remote controller | ● | |
| Cable remote controller with 40m cable | ● | |
| Automatic greaser for hopper | ● | |
| Greade gun | ● | |
| Two colors painting | ● | |
| Water pump and nozzle with hose | ● | |
| Spare hydraulic hose | ● | |
| Spare relay and fuse | ● | |
| Manual and spare parts book | ● | |

| | Standard | Options Package |
|---|----------|-----------------|
| 4M end hose | ● | |
| Working search light on hopper | ● | |
| Concrete pipe line, st52 | ● | |
| Concrete pipe line, twin layer | | ● |
| Concrete pipe line, heat-treated | | ● |
| Tunstn carbide wear plate and wear ring | | ● |
| Aluminum deck | | ● |
| Aluminum hopper cover | | ● |
| Automatic greaser for boom | | ● |
| Vibrator on hopper grid | | ● |
| High pressure piston water pump | | ● |
| Working search light on boom | | ● |
| Big mouth s-valve | | ● |
| Air compressor | | ● |

P. O. Box 102, Te Kauwhata 3741, New Zealand. Telephone: 07-8263113 Mobile: 021-972800
Email: awt@internet.co.nz